



EW HOWELL
CONSTRUCTION GROUP
BUILD SIMPLY.

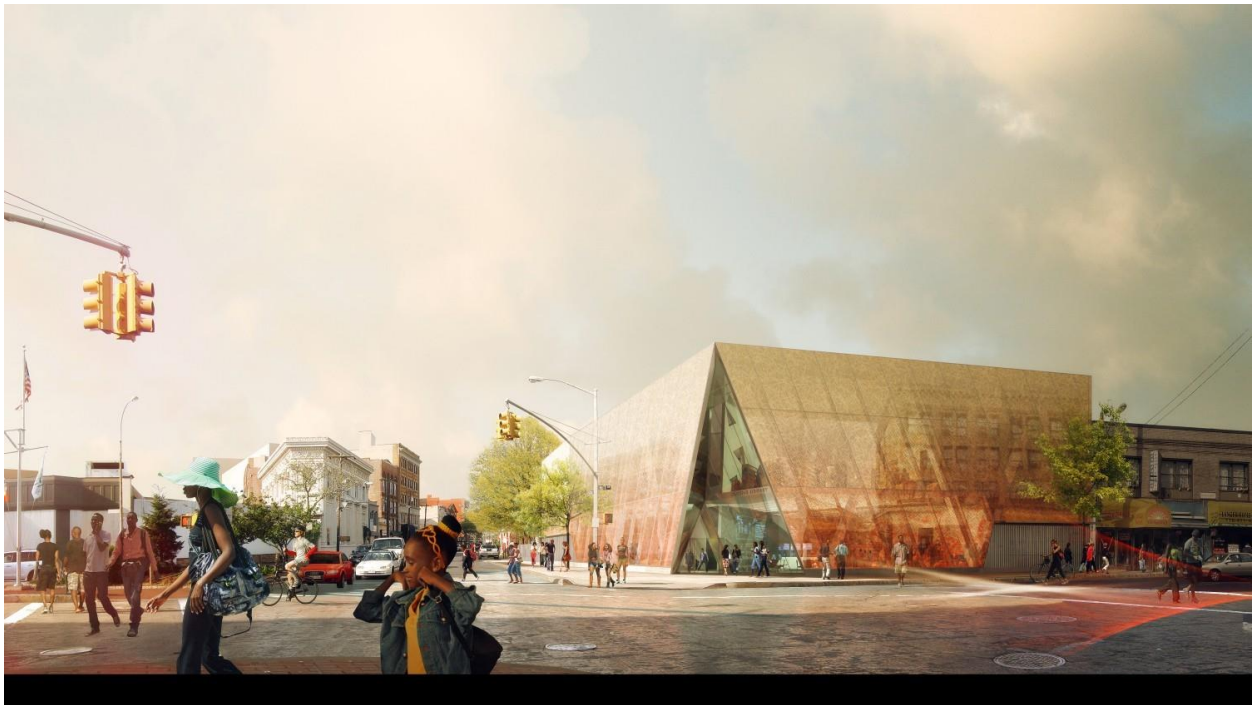


For Immediate Release

EW Howell Construction Group's Education Division Selected to Build New Far Rockaway Library in Queens

(Plainview, N.Y. – October 17, 2018) – EW Howell Construction Group, one of the region's leading education, retail, cultural, government and healthcare builders, announces that the New York City Department of Design and Construction has awarded the firm the general contract to build the new Far Rockaway Branch of the Queens Public Library. The two-story, 17,500-square-foot project will replace the existing 8,000-square-foot building at 1637 Central Avenue in Far Rockaway, NY and double the area of library space offered to patrons. Completion is expected in Fall 2020.

"The new Far Rockaway Branch Library, with its one-of-a-kind design, will be a prized part of the community," said John K. Hagen, P.E., vice president of the education division at EW Howell. "The project's construction, with all of its intricate details, is unique, though becoming somewhat of a trend as we see cities looking to transform public spaces like libraries and parks into the focal point of their communities."



courtesy of Snøhetta.

The Far Rockaway Branch Library is heavily used and plays an important role in the vibrant community. During Hurricane Sandy, the library was used to provide disaster relief, and this renovation will increase the amount of and access to necessary services provided to the neighborhood. Located less than a mile from the Rockway Beach Boardwalk, the new library will be sited at an elevation exceeding the new FEMA flood zone guidelines and will seek to achieve LEED Gold certification.

Designed by Snøhetta, the international architecture and design firm based in Oslo, Norway and New York City, the new Far Rockaway Branch Library will be clad in fritted glass, colored in a light shade that will offer calm contrast to the hustle and bustle of the surrounding retail and pedestrian areas. The fritting will provide a combination of transparency and translucency that will give passerby a sense of the activity within the library, while giving a degree of privacy for library occupants. The library's entryway features a tall transparent glass pyramidal opening at the corner of Mott and Central avenues.

Founded in 1891, EW Howell Construction Group is a leading New York based General Construction and Construction Management firm with offices in Manhattan and on Long Island. They provide construction services throughout the region to a diverse range of clients in the Retail, Education, Arts & Cultural, Healthcare and Government sectors. Dedicated to a "Build Simply" approach, the firm provides a simplified construction experience for its clients making even the most complex projects well-executed endeavors delivered on time, on budget, and with as little complication as possible. EW Howell's meticulous pre-construction, planning and project management, combined with collaborative client relationships and strong connections with the region's top sub-contractors ensures they continue to deliver world class projects for their clients as they have done for over 125 years. For more information, visit: www.ewhowell.com.

###

Contact: Great Ink Communications—212-741-2977
Roxanne Donovan, Roxanne@greatink.com
Eric Gerard, eric@greatink.com
Lindsay Church, Lindsay@greatink.com

EW Howell Construction Group — (516) 921-7100
Denise Orlando, dorlando@ewhowell.com